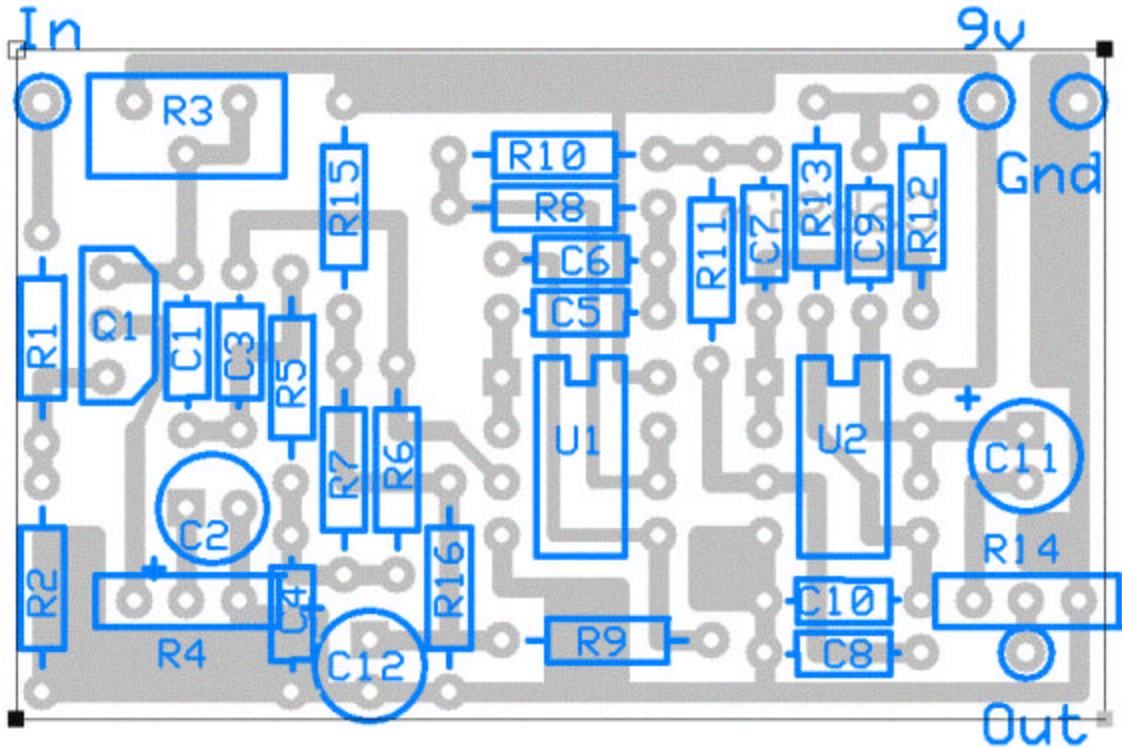


"Condor Cab Simulator" by runoffgroove.com

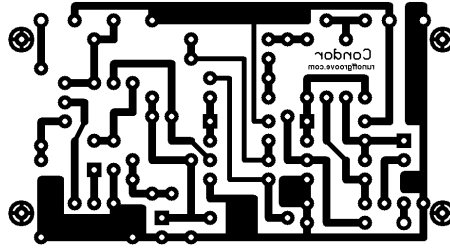
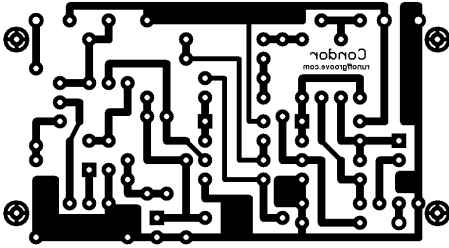
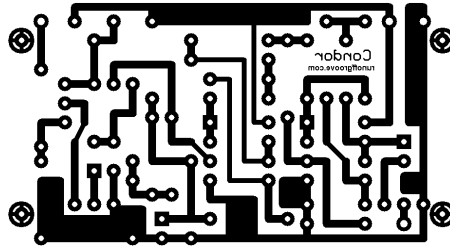
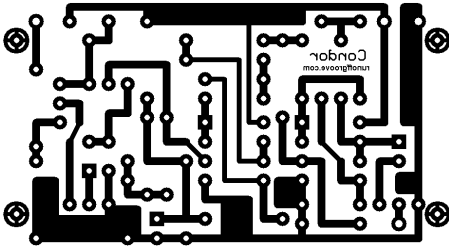
PCB layout by Pablo De Luca (aka Gringo)
 V0.6 November 11, 2004



Parts List:

Capacitors	Resistors	Semiconductors
C1 47n	R1 18k	Q1 J201/MPF102/2n5457
C2 22uF	R2 1M	U1 Standard Dual OA
C3 1n	R3 100k trim	U2 Standard Dual OA
C4 15n	R4 1k L Gain	
C5 47n	R5 100k	
C6 47n	R6 100k	
C7 3n9	R7 100k	
C8 1n	R8 18k	
C9 3n9	R9 100k	
C10 1n	R10 22k	
C11 22uF	R11 22k	
C12 22uF	R12 22k	
	R13 22k	
	R14 10k A Vol	
	R15 22k	
	R16 22k	

Transfers:



Board Dimensions: 59.06mm x 32.38mm (2.34" x 1.28")