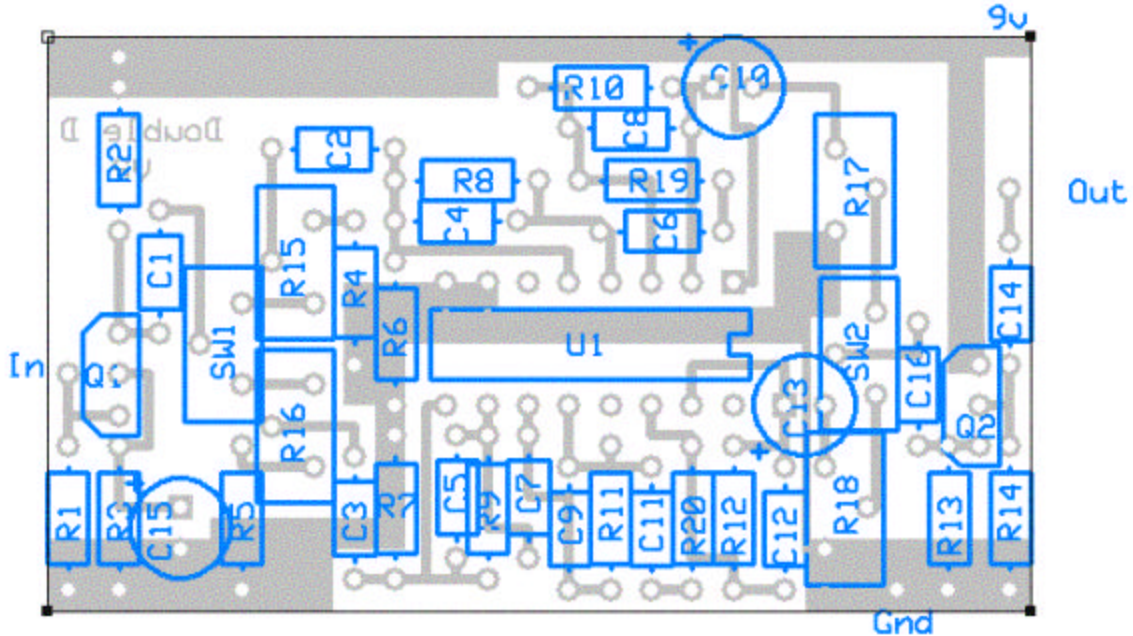


"Double D" by runoffgroove.com

PCB layout by Pablo De Luca (aka Gringo)
Version 1.1 June 15, 2004



Parts List:

Capacitors	Resistors	Semiconductors	Misc
C1 .047	R1 1M	Q1 J201	SW1-2 DPDT switch
C2 .022	R2 10k (trim)	Q2 J201	
C3 .047	R3 470	U1 CD4049	
C4 100pf	R4 10k		
C5 470pf	R5 10k		
C6 .1	R6 1M		
C7 .22	R7 2.2M		
C8 47pf	R8 120k		
C9 220pf	R9 470k		
C10 4.7uF	R10 1M		
C11 .22	R11 220k		
C12 47pf	R12 1M		
C13 4.7uF	R13 1M		
C14 .22	R14 10k		
C15 10uf	R15 100kA Gain 1		
C16 .22	R16 100kA Gain 2		
	R17 100kA Vol 1		
	R18 100kA vol 2		
	R19 470k		
	R20 470k		

Warning: The FET orientation is reversed. The pinout used is (from top to bottom): D-S-G.

Transfers:

