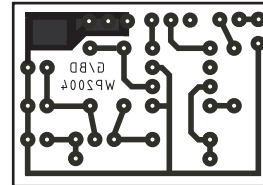
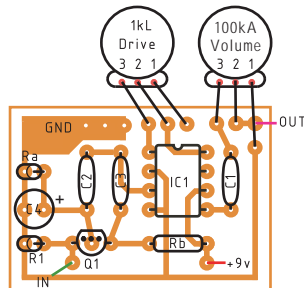


Grace/Big Daddy

This layout will allow you to build runoffgroove.com's Grace or Big Daddy. They are both based around the same circuit, but only minimal substitutions are necessary between the two. Visit www.runoffgroove.com for build details. Q1 is shown as 2N5457, other FETs will work. Note that pinout is GSD from left to right looking at the layout.



Grace Parts

Resistors

R1 – 4M7
Ra – 15k
Rb – Jumper

Capacitors

C1 – 0.1µF
C2 – 0.0068µF
C3 – Nothing
C4 – Nothing

Semiconductors

IC1 – LM386
Q1 – 2N5457

Big Daddy Parts

Resistors

R1 – 4M7
Ra – 2.2k
Rb – 15k

Capacitors

C1 – 0.1µF
C2 – Nothing
C3 – 0.0068µF
C4 – 2.2µF Electrolytic

Semiconductors

IC1 - LM386
Q1 – 2N5457

This Layout/PCB ©2004 William Percival.

Permission refused for posting at any site other than Stompbox Static or www.runoffgroove.com.

4/4/2004 Revision 1.1 - Added missing trace from pins 2 & 4 to ground. New layout is more compact. Also includes parts lists.