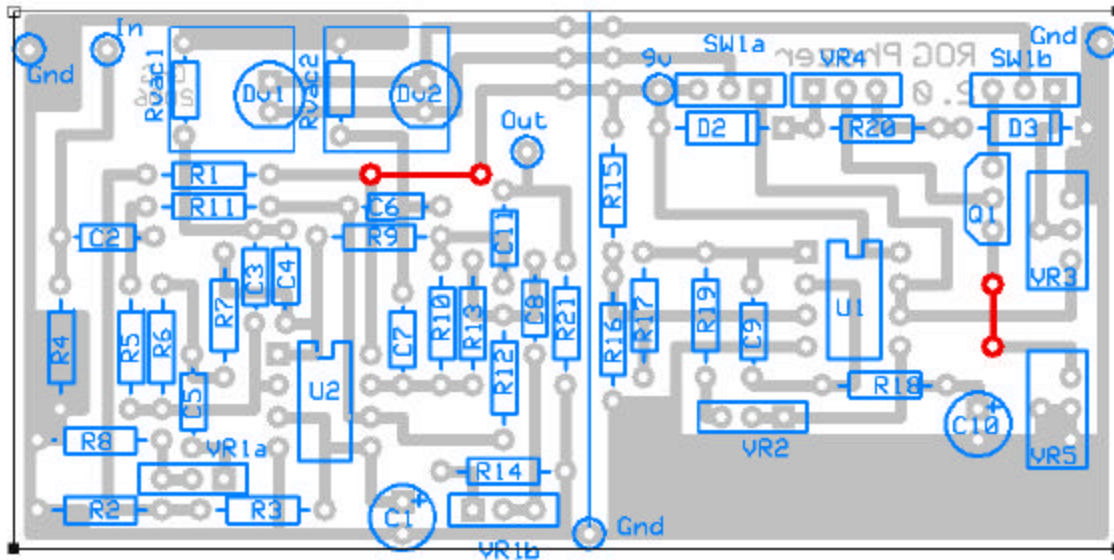


"Phozer 2.0" by runoffgroove.com

PCB layout by Pablo De Luca (aka Gringo)

v0.95 July 17, 2006



* Dv1, Dv2, Rvac1 and Rvac2 are the pads that connect to the optocouplers, with DvX the LED.

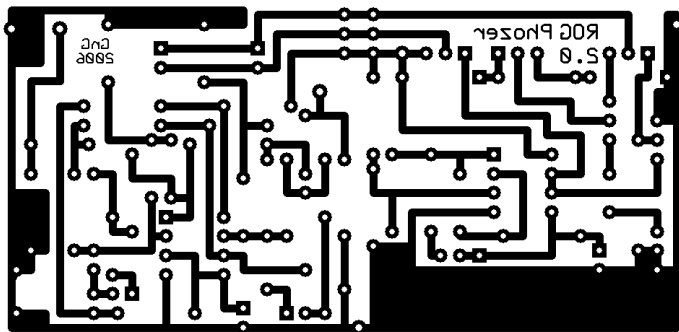
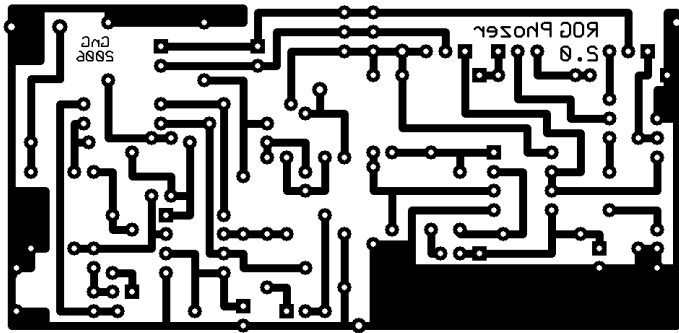
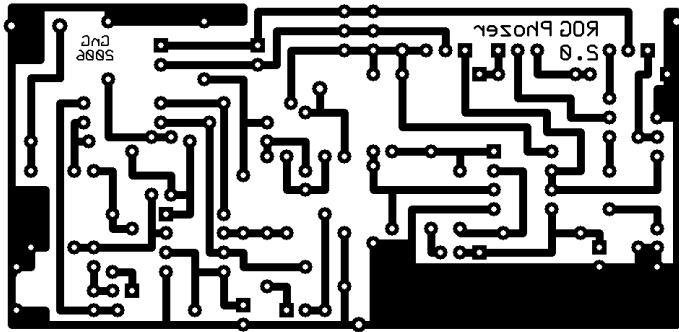
** Parts used for manual sweep mod. To hardwire the Phozer in LFO mode, see Figure 1 on page 2.

(Red stripes are jumpers)

Parts List:

Capacitors	Resistors	Semiconductors	Misc
C1 220uF	R1 27k	Dv1 LED*	SW1 DPDT
C2 100n	R2 27k	Dv2 LED*	
C3 10n	R3 220	D2 LED **	
C4 10n	R4 1M	D3 1N914 **	
C5 100n	R5 150k	Q1 2N5088 **	
C6 2n2	R6 75k	U1 TL072	
C7 2n2	R7 75k	U2 TL072	
C8 10n	R8 39k		
C9 10n	R9 27k		
C10 10uF	R10 27k		
C11 100n	R11 150k		
	R12 75k		
	R13 75k		
	R14 39k		
	R15 150k		
	R16 150k		
	R17 150k		
	R18 150k		
	R19 6k8		
	R20 10k **		
	R21 150k		
	VR5 10k trim **		
	VR2 500k Rev Log Rate		
	VR3 2k trim Balance		
	VR4 100k Lin **		
	VR1a 100k Lin Resonance		
	VR1b 100k Lin Resonance		

Transfers:



Board Dimensions: 90.17mm x 43.82mm (3.55" x 1.725")



Figure 1: Fixed in LFO mode